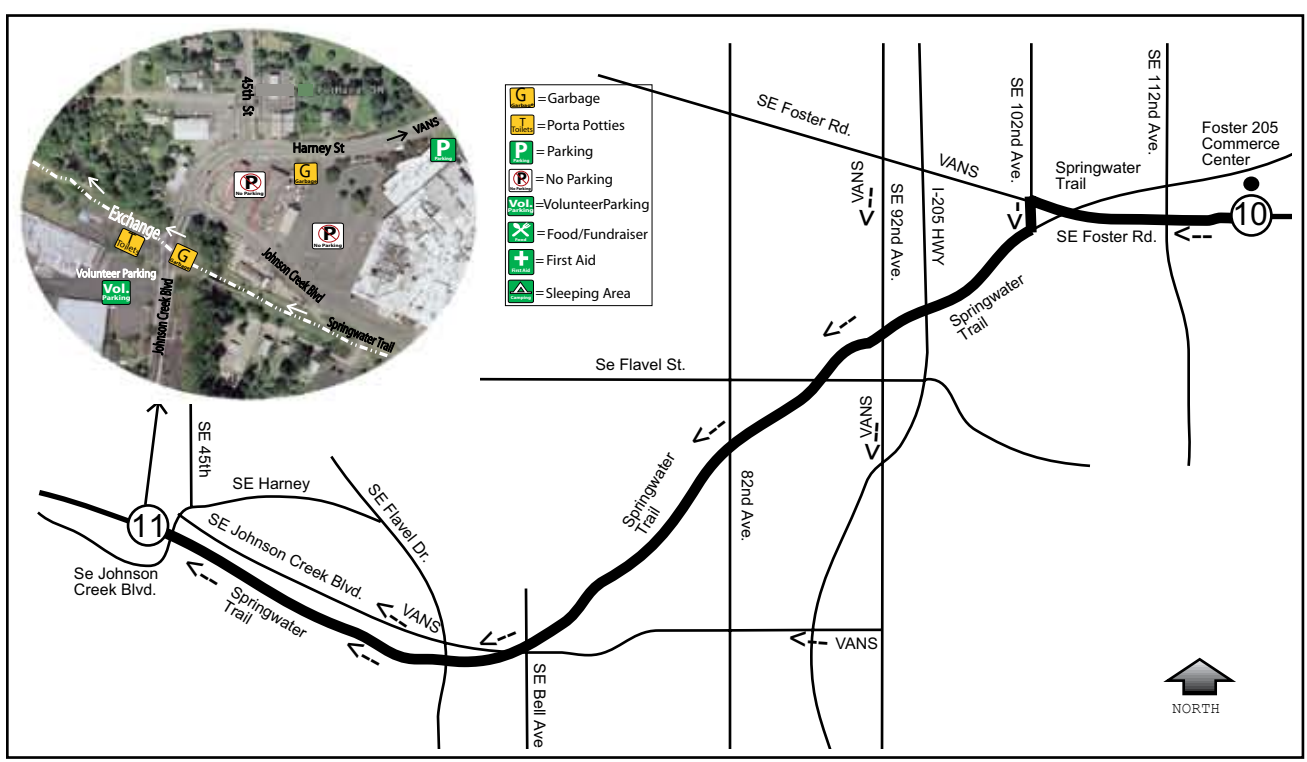


LEG 11

4.39 Mi.~Easy



LEG DESCRIPTION:

Short leg mostly along Springwater trail over relatively rolling to flat terrain.

EXCH ADDRESS:

4401 SE Johnson Creek Blvd
Portland, OR 97222

LEG NOTES:

Runner on Springwater Trail with various city street crossings for access to runner.

From Ex 10, vans continue on Foster Rd for approx. 1.2 miles to 92nd Ave (turn left) and continue 1.6 miles to Johnson Creek Blvd (turn right) and continue 2.5 miles to Exchange.

Van parking in Precision Castparts lot near intersection of Johnson Creek Blvd and 45th Avenue.

LEG LEGEND:

- 0.00 Foster 205 Commerce Center Exchg. #10 @ Foster Rd near 116th.
- ← 0.85 102nd Ave.
- 0.95 102nd Ave(Springwater Trail)
- ↑ 1.60 92nd Ave (Springwater Trail)
- ↑ 2.27 82nd Ave (Springwater Trail)
- ↑ 3.17 Bell Ave. / Johnson Creek Blvd. (Springwater Trail)
- 4.39 Associated Chemist, Inc. Exchg. #11 @ 45th Avenue / Johnson Creek Blvd.

