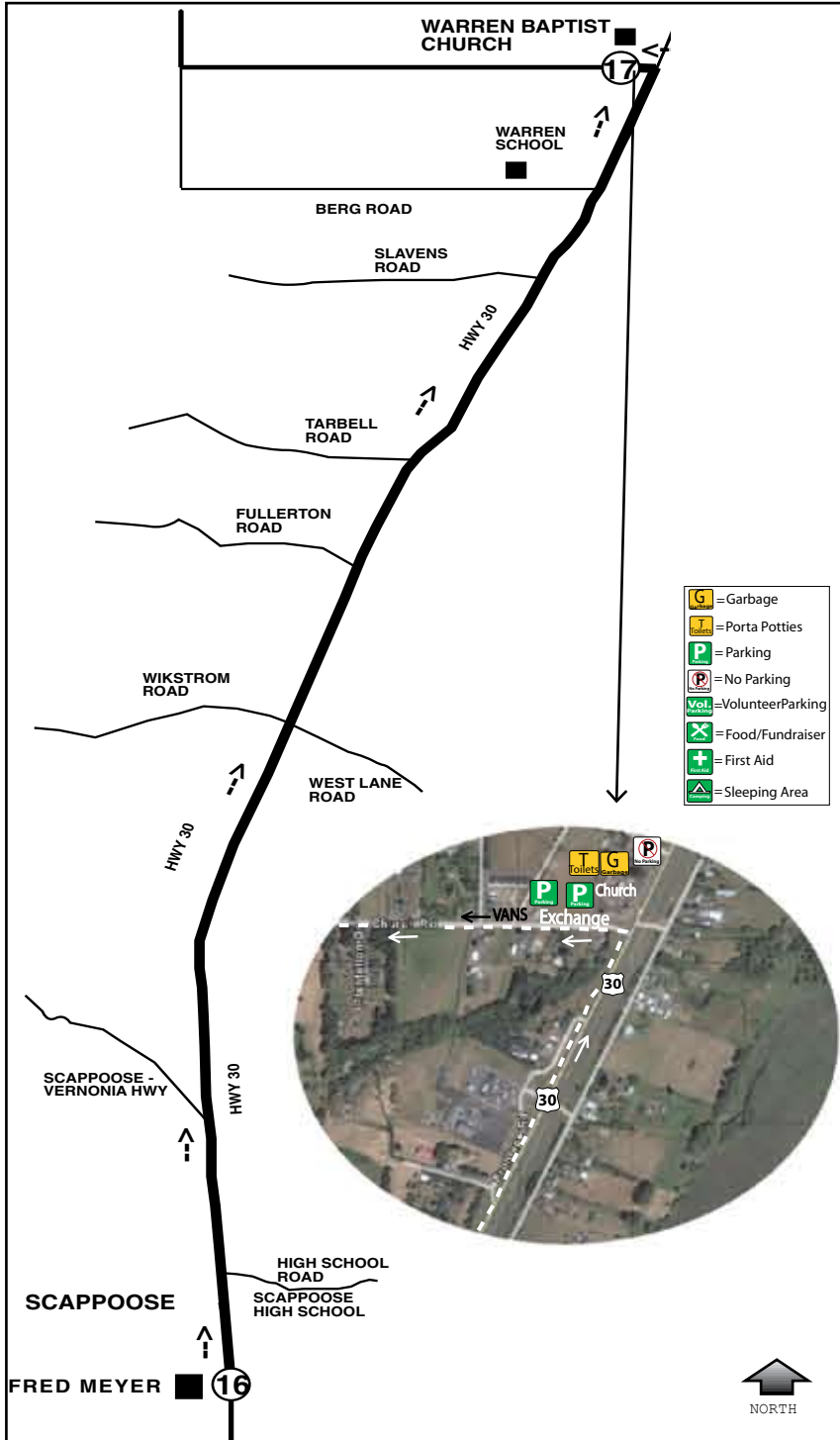
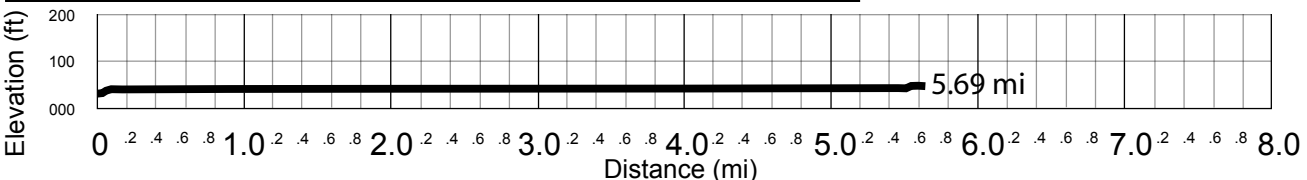


LEG 17

5.69 Mi.~Easy



- = Garbage
- = Porta Potties
- = Parking
- = No Parking
- = Volunteer Parking
- = Food/Fundraiser
- = First Aid
- = Sleeping Area



LEG DESCRIPTION:

Basically flat terrain on paved shoulder along Highway 30.

EXCH. ADDRESS:

56799 Columbia River Hwy
Warren, OR 97053

LEG NOTES:

*From Exch. 16, runners proceed along left side of road facing traffic.

VAN PARKING: turn onto Church Road and proceed to parking in Warren Baptist Church.

Do not stop on HWY 30 at Exchange 17 (Warren Baptist Church) to drop off or pick up teammates.

Vans are to proceed from Exch 17 to Fairgrounds (Exch 18) by continuing on Church Rd. and following runners on Leg 18 to Exch. 18.

Last fuel stop in St. Helens/Exch 18!

LEG LEGEND:

- 0.00 Exchange #16 @ Fred Meyer / HWY #30
- ↑ 1.45 Pittsburgh - Vernonia HWY / HWY #30
- ↑ 2.62 Wikstrom Road / HWY #30
- ↑ 3.58 Fullerton Road / HWY #30
- ↑ 3.95 Tarbell Road / HWY #30
- ↑ 4.62 Slavens Road / HWY #30
- ← 5.69 Warren Baptist Church Exchange #17 @ Church Road/ HWY #30